

[TopPage](#)>>[Search Result](#)>>7214

Angular Contact Ball Bearings

Bearing No. : **NACHI 7214**

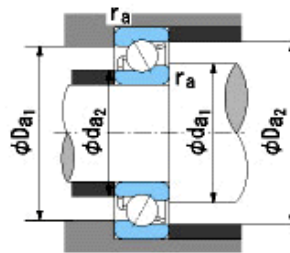
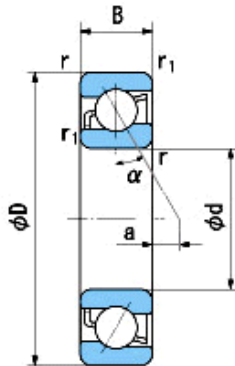
■ Bearing Type

■ Clearance

■ Tolerance Class

Dimensions

d = 70⁰_{-0.015}
 D = 125⁰_{-0.018}
 B = 24⁰_{-0.150}
 r = 1.5~2.3
 (Radial Direction)
 r = 1.5~4
 (Axial Direction)
 r1 = 1~1.9
 (Radial Direction)
 r1 = 1~3
 (Axial Direction)
 a = 16.1



Dimensions

da1(min) = 79
 da2(min) = 75
 Da1(max) = 116
 Da2(max) = 119.6
 ra(max) = 1.5
 ra1(max) = 1
 Mass = 1.12 kg

Basic Dynamic Load Rating Cr : **76,500** N
 Basic Static Load Rating Cor : **63,500** N
 Limiting Speed ;
 Grease Lubrication : **4,500** min⁻¹
 Oil Lubrication : **6,300** min⁻¹

	INNER RING	OUTER RING
O.D.Surface Runout with Side :		-
Axial Runout with Bore :	-	-
Axial Runout with Raceway :	-	-
Width Variation :	0.025	0.025
Radial Runout :	0.020	0.040